

Remote Camera Monitoring User Guide
V1.0

Document Control

	Title	Name
Created By:	Software QA Officer and Software Engineer	Amr Hesham Abd El-Hafeez Mohammed

Revision History

Revision	Date	Description	Author
V1.0	Apr 6, 2010	Document created.	Amr Hesham

Table of Contents

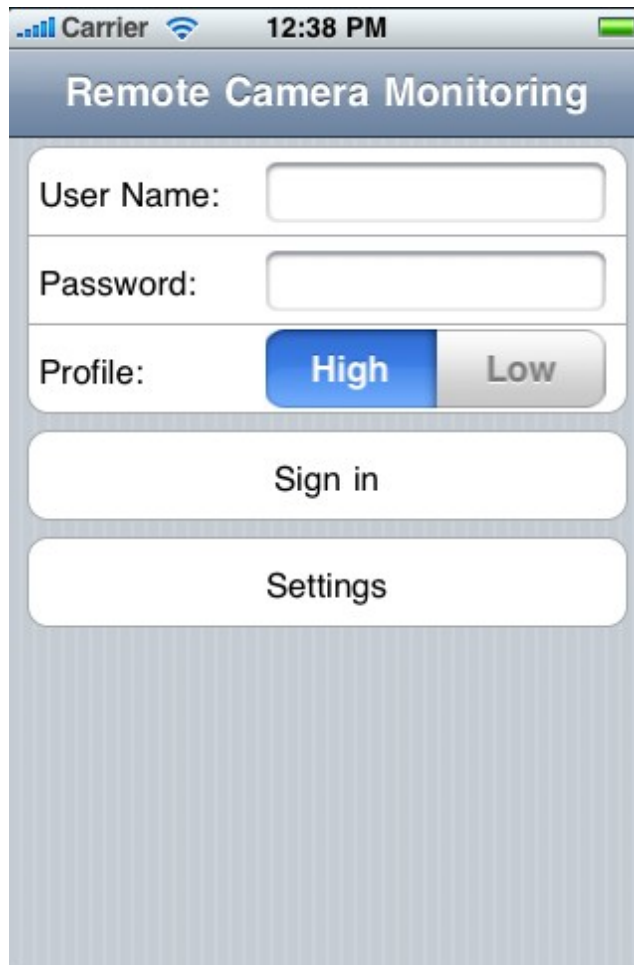
System Requirements.....	5
Starting The Application.....	6
Configuring The Server Settings.....	7
Logging-In.....	8
Video Streaming.....	9
Last Viewed.....	13
Fast Find.....	15
Favorites.....	17
Add To Favorites.....	17
View Streaming From A Favorite Camera.....	19
Remove A Camera From The Favorites List.....	21

System Requirements

1. The client must be installed on an iPhone 3G or later mobile phone.
2. The mobile phone must be connected to the internet.

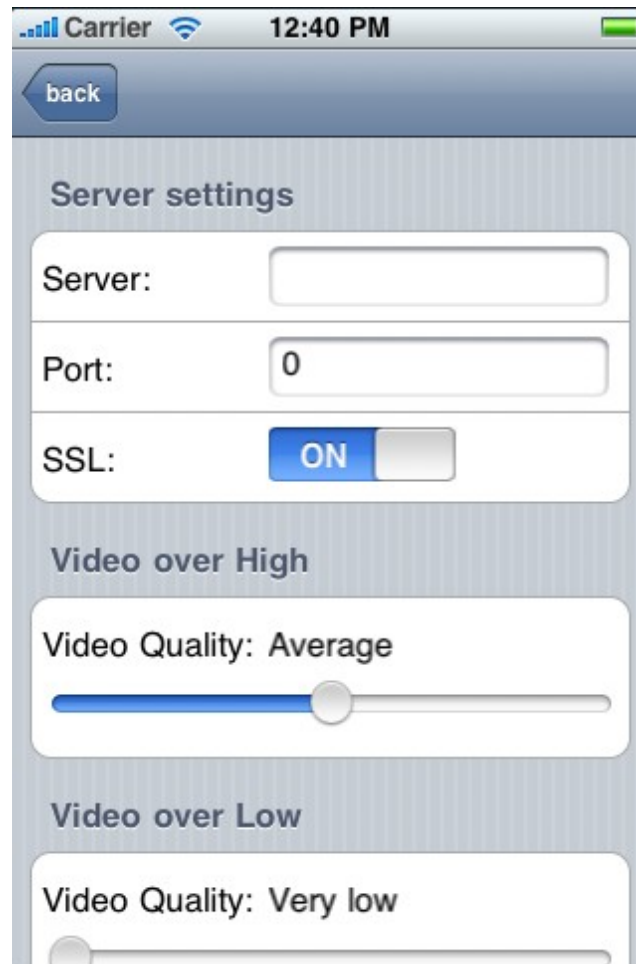
Starting The Application

1. On the iPhone, click on the “Remote Camera Monitoring”’s icon to start the application. The application will be started and the log-in page will appear, it will look like the next image.



Configuring The Server Settings

1. To configure the server settings, click **Settings** button. The settings page will appear, it shall look like the next image.



2. Enter the server's IP address in the **Server** field.
3. Enter the server's port in the **Port** field.
4. Select using SSL connection or not.
5. Select the streaming quality when using “High” profile.
6. Select the streaming quality when using “Low” profile.
7. Click **back** button (on the top-left side of the screen) to save your configurations and go to the log-in page again.

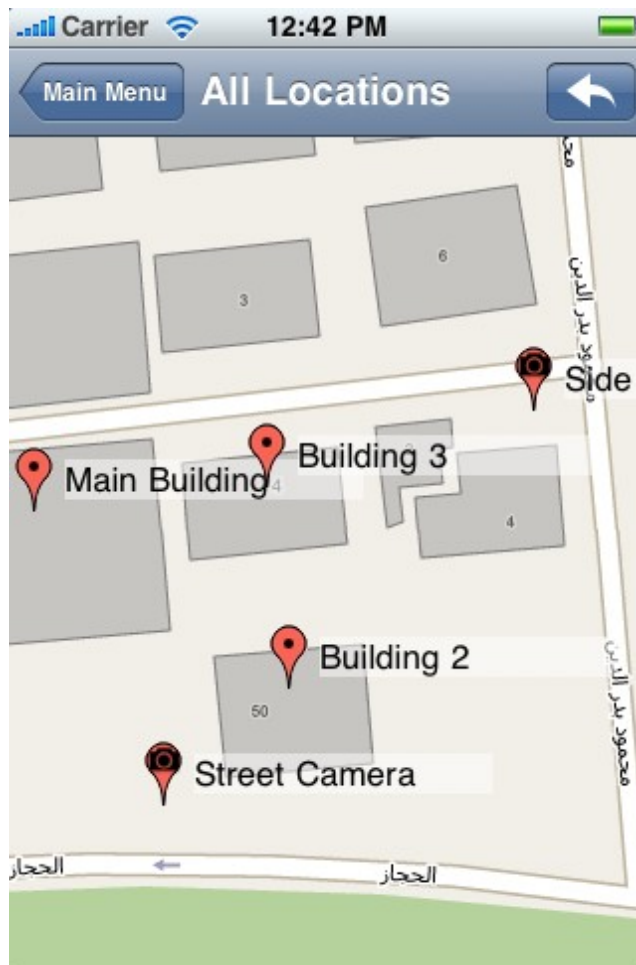
Logging-In

1. After configuring the server and going back to the log-in page, enter the user name created in the server in the **User Name** field.
2. Enter the password in the **Password** field.
3. Through the **Profile**, select using “High” or “Low” profile.
4. Click **Sign in** button. The system will start loading then it will log-in to the main menu as shown in the next image.



Video Streaming

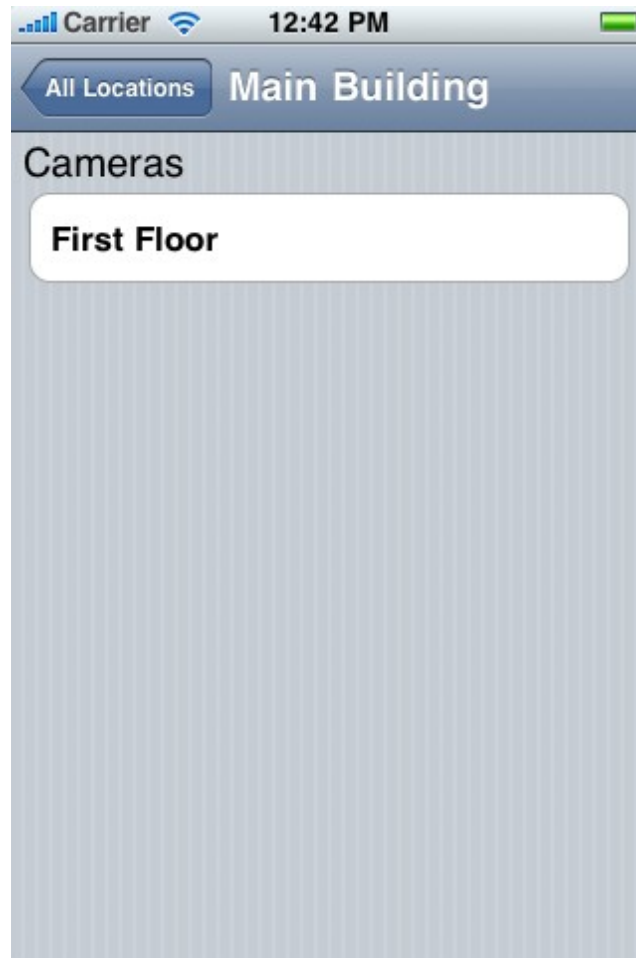
1. To start video streaming, from the main menu, select **All Locations**, a map with the available locations / cameras will appear as in the next image (note that the map and the locations are added in the server application not by the client).



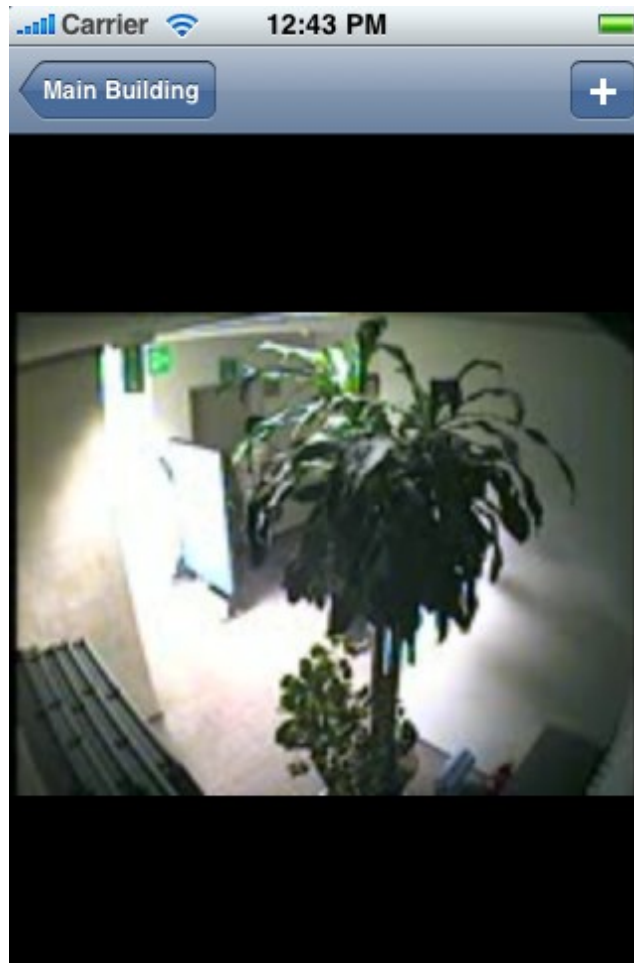
- 1.1. Note that by clicking on the arrow sign on the top-right corner of the screen the map is replaced by buttons indicating the locations and the cameras, to go back to the map view, just click on the same button.



2. Click on any location in order to find its sub-locations and / or cameras.



3. Select a camera to see its video streaming.

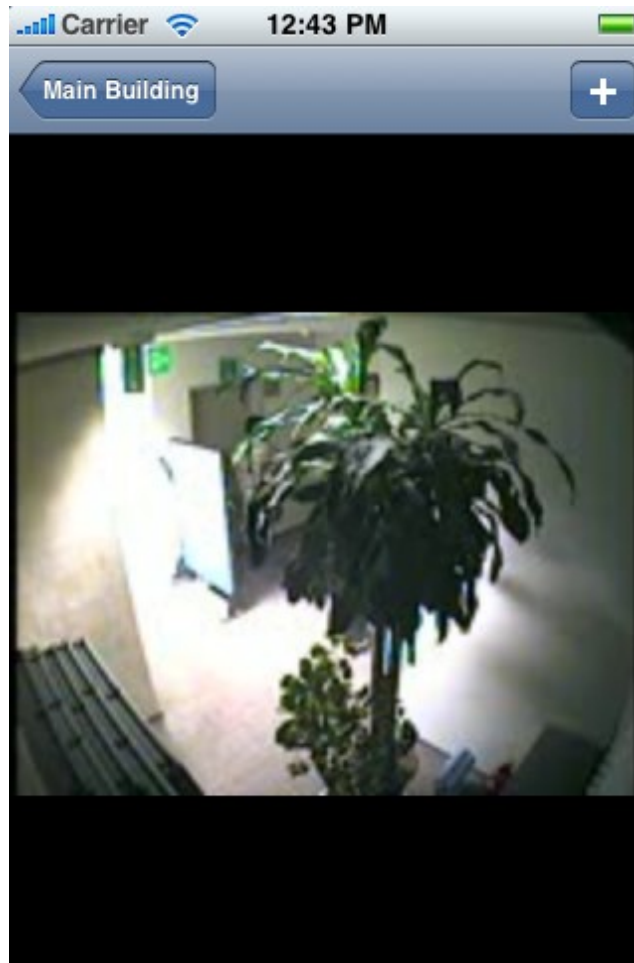


Last Viewed

1. To see the cameras that were recently viewed, from the main menu, click on Last Viewed button.

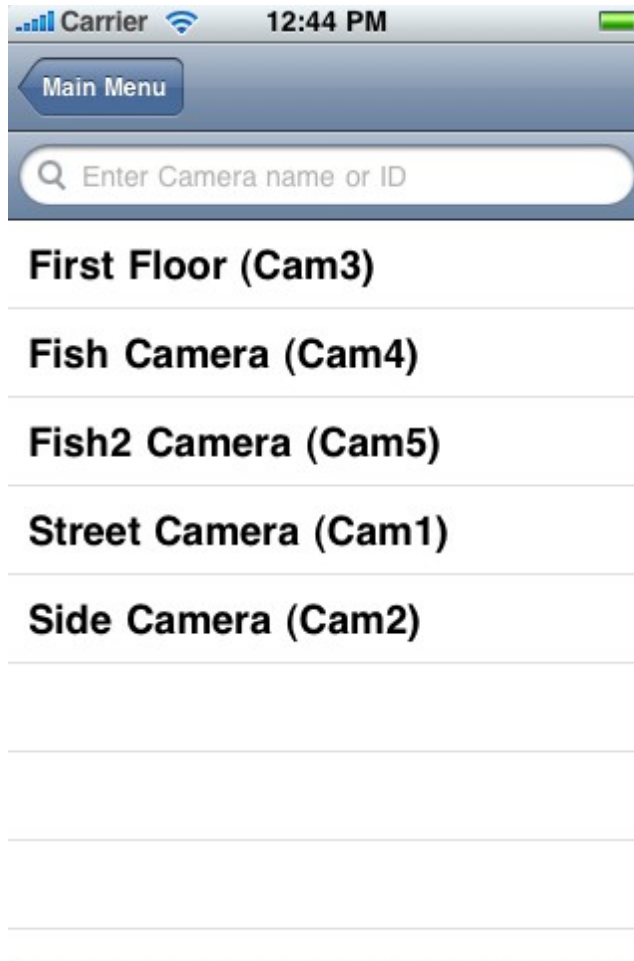


2. Select the camera, the streaming would begin.

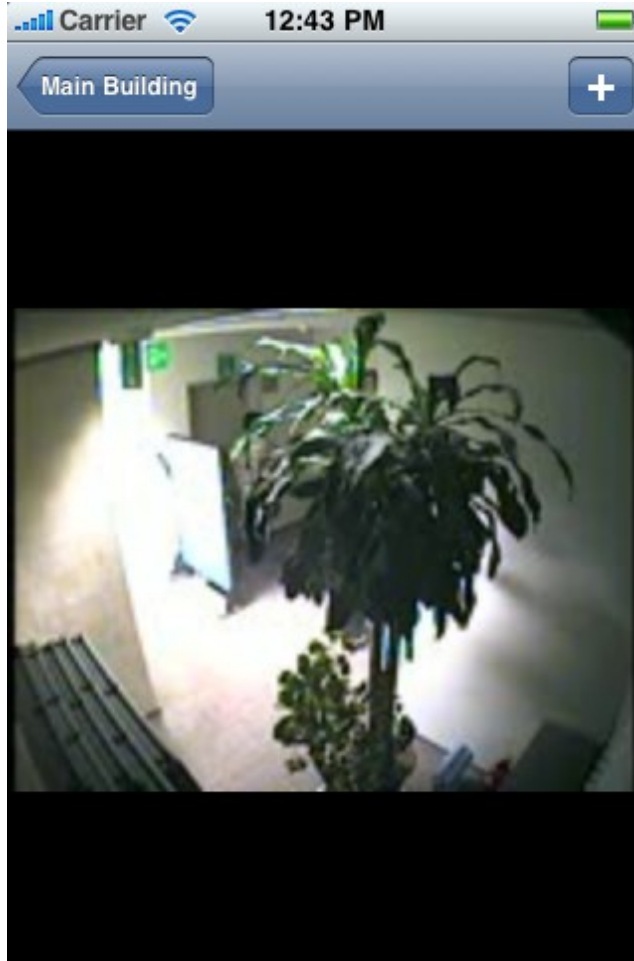


Fast Find

1. To search for a specific camera, from the main menu, select **Fast Find** option.



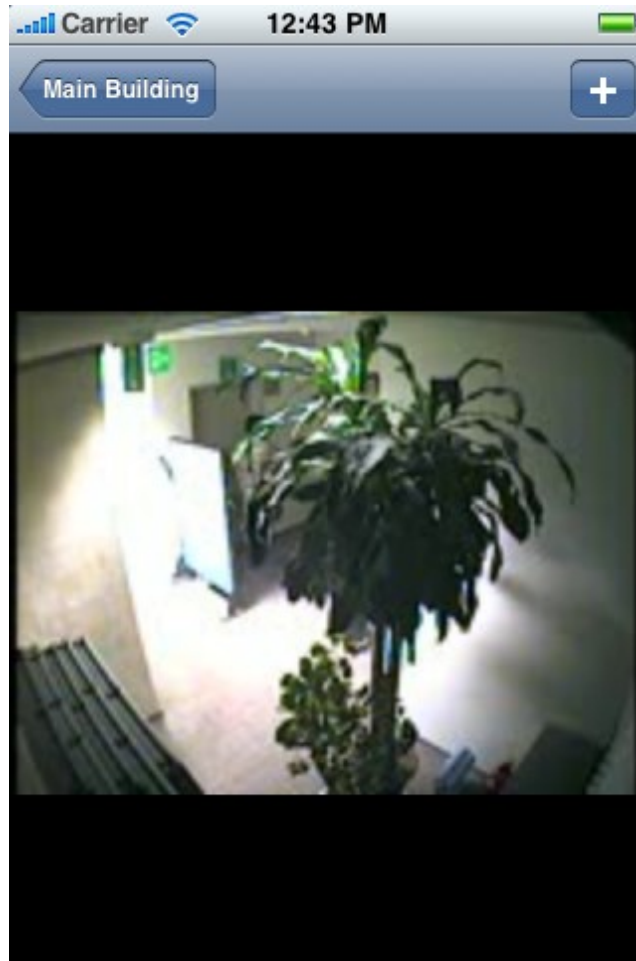
2. As you are typing the camera's name in the search-box, the list of cameras will be filtered until the required camera is found. When the required camera is found, select it to see its streaming.



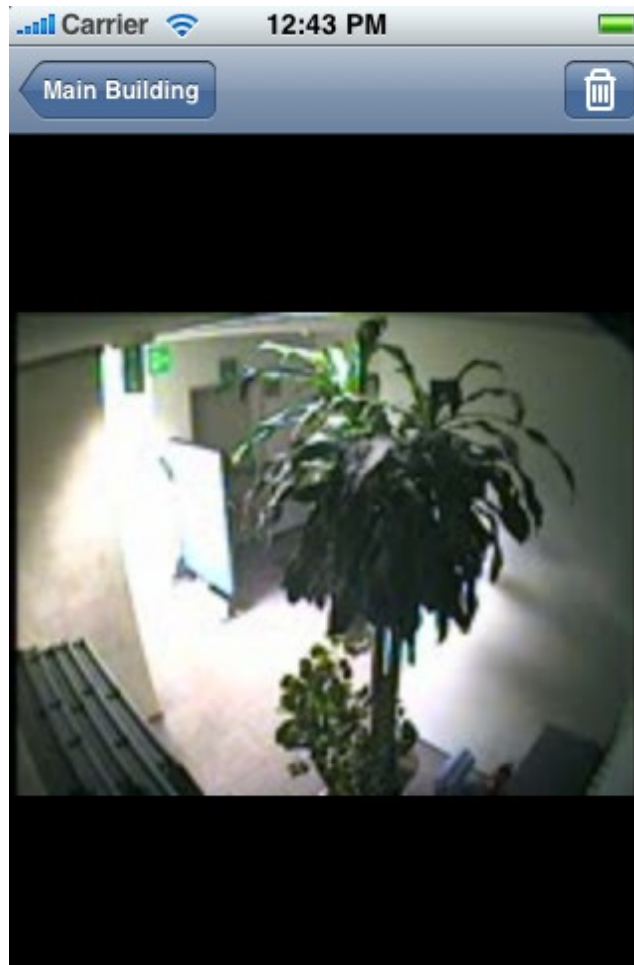
Favorites

Add To Favorites

1. To add a camera to the favorites list, while streaming, click on the + button on the top-right corner of the screen.



2. Notice that the button will change to a bin shape.

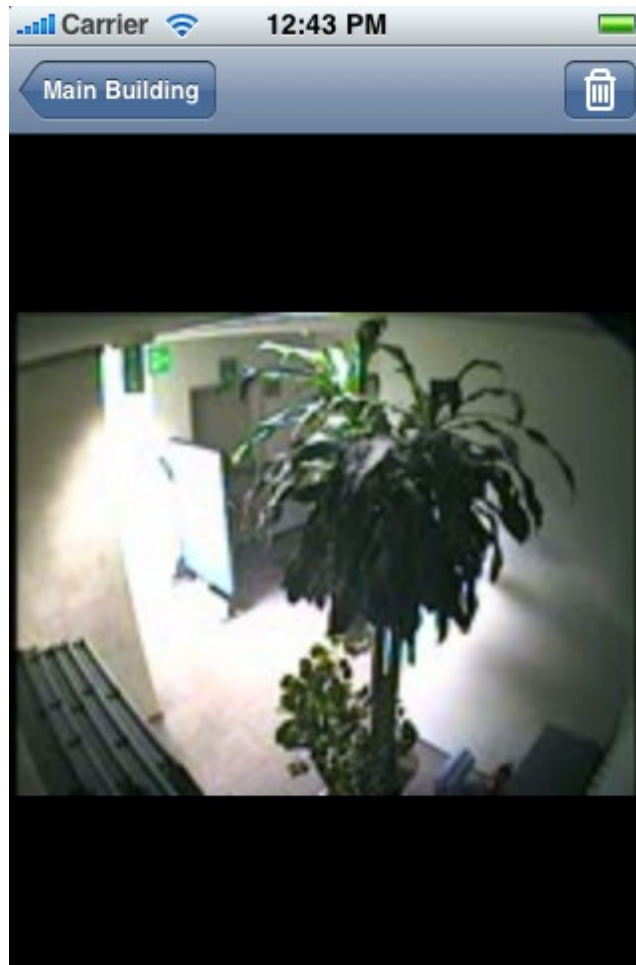


View Streaming From A Favorite Camera

1. To view the streaming of a camera which is already added to the favorites list (note that there must be at least one camera added to the favorites list), from the main menu, select **Favorites**, a list of your favorite cameras will appear.

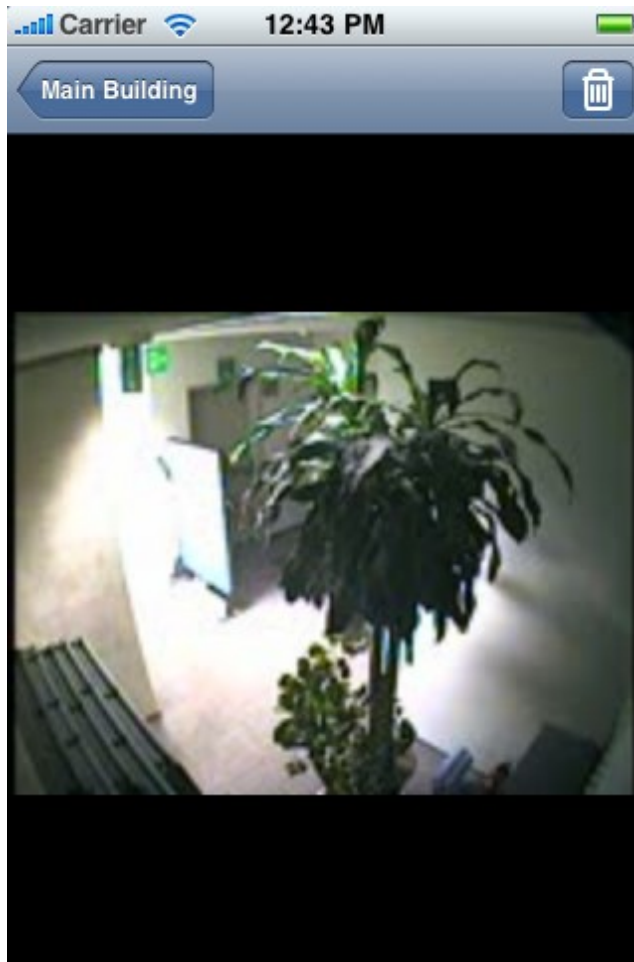


2. Select a camera.



Remove A Camera From The Favorites List

1. To remove a camera from the favorites list (note that there must be at least one camera in the favorites list), while streaming the camera that is required to be removed from the favorites list, click on the bin button on the top-right corner of the screen.



2. Notice that the bin shape was changed to a + sign.

